

St John's Lutheran School Kingaroy

Pastoral Care Guidelines

Pastoral Care is the demonstration of Christian love to one another in practical ways.

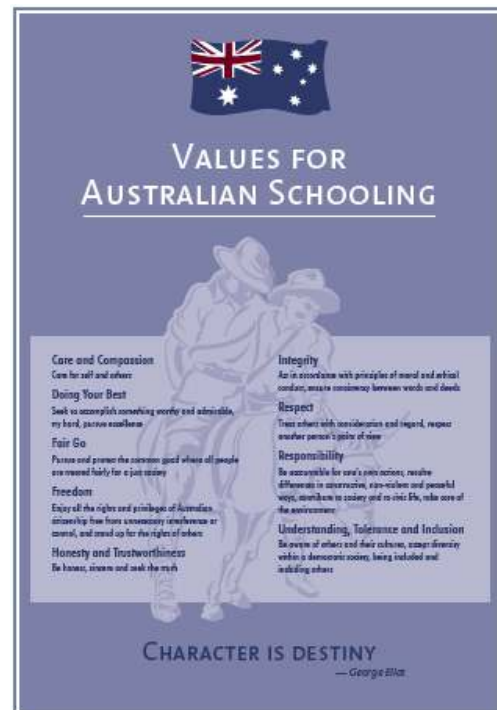
In our school we believe that each one of us is a unique and precious creation of God. God is interested in our total wellbeing (emotional, mental, physical and spiritual), and as a Christian School our focus is to provide pastoral care to all involved within our school community. As Christians we believe that God comes to us in worship and empowers us to live our lives in ways that are pleasing to Him. Therefore, we are intentional in participating in relevant daily devotional and worship times.

An important part of the calling of being a staff member in our school is that of modelling a Christian approach to life – listening and encouraging others to develop their God given special abilities and talents.

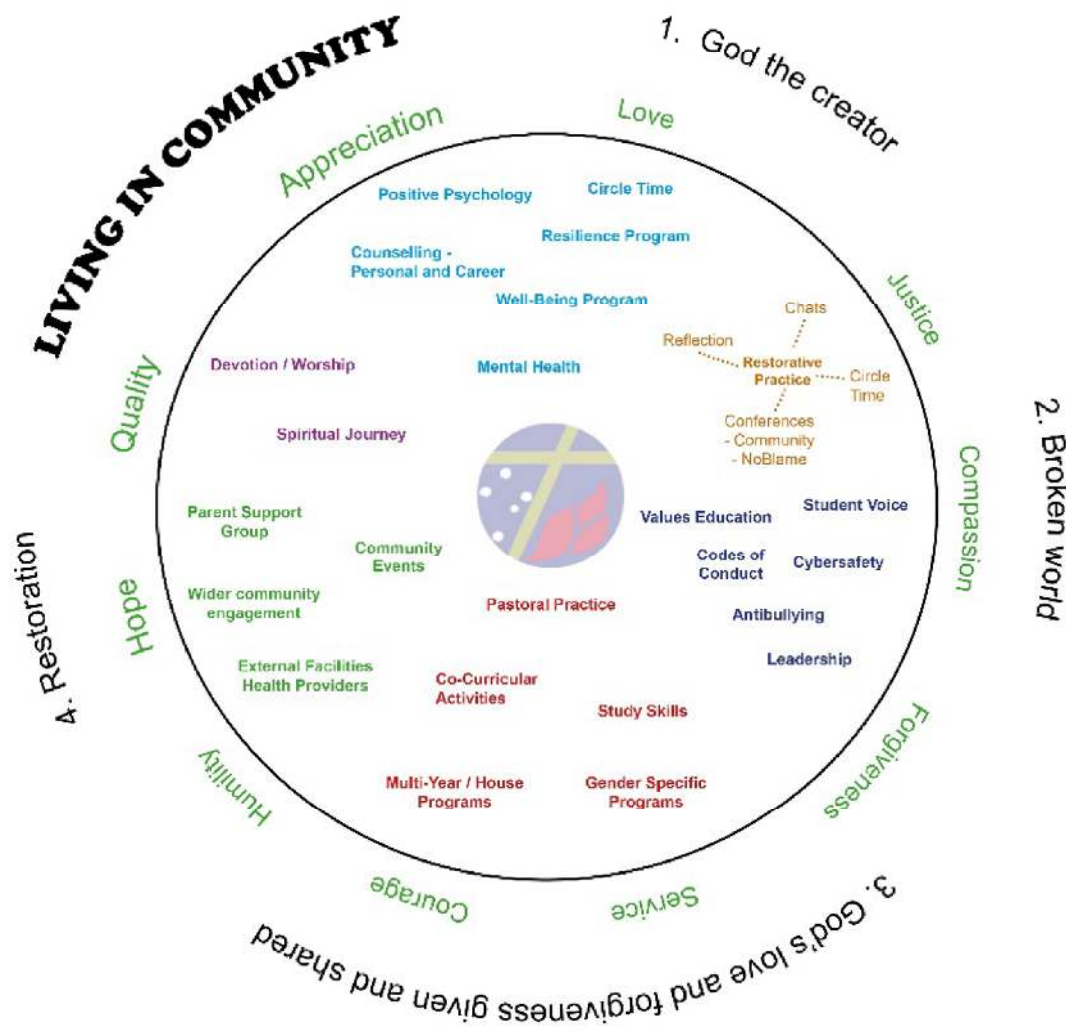
The distinctively Lutheran Law / Gospel principle is useful here in reminding us that in our own strength we are unable to live a perfect life and that we need Jesus' love and forgiveness to maintain right relationships with God and with each other in our school community.

Our aim is that all members of our school community receive and demonstrate respect and care for each other in accordance with the beliefs and values we hold as a Christian community. These values incorporate the Lutheran Education Australia 'Lifelong Qualities for Learners' and the Department of Education 'Values for Australian Schooling'.

The Seven C's



Building Lifelong Qualities (A Diagram)



Therefore, as a school, we have adopted the 7 C's as a guide for our school community to live by:

- Christ
- Co-operation
- Communication
- Courtesy
- Consideration
- Care
- Christian leadership

Pastoral Care encompasses all school life and reaches all aspects of the community.

Pastoral Care for Students

It is our endeavour to provide an environment where children are nurtured and valued and encouraged to reach their potential. Opportunities for children to share God's Word and their response to His love will be provided through meaningful devotions and worship experiences.

Support for students will be provided by:

- Interclass buddy system;
- Staff members being available to listen to student's concerns;
- Links with church youth groups;
- Relationship management policy;
- Restorative practices;
- Drug education;
- Bullying intervention;
- Learning support program;
- Positive role modelling by staff;
- Critical incident management;
- Lunch-time extra-curricular activities;
- Camping Pastoral facilitator.

Pastoral Care for Families

Pastoral Care for families recognises the need to support parents in the upbringing of their children. At St John's Lutheran School, it is our goal to provide services to assist parents in the development of the "whole" child, including the physical, intellectual, social, emotional and spiritual care.

Parents can be assisted by:

- Pastoral Care contact person who liaises with families in times of need. This may include provision of food, care of children, counselling etc.;
- Organised informal activities for families;
- Opportunities for worship at church/school services;
- Pastoral care orientation sessions;
- P&F meetings;
- Restorative practices;
- Critical Incident Management.

Pastoral Care for School Staff

A vital aspect of working as a team is caring for each other.

Pastoral care of and between staff members is necessary to support and encourage all members of staff in their particular roles within our school community. Staff can be supported by:

- Peer mentoring;
- Shared devotional, bible study and prayer times;
- Incidental and formal sharing and meeting times;
- Restorative practices;
- Opportunities to meet with parish pastor;
- Social events;
- Debriefing times after major events;
- Critical Incident Management.

Pastoral Care for School Council

The dedicated individuals who volunteer their time to sit on the School Council also need to be supported with pastoral care as they lead and direct our school. Pastoral care is given by:

- School staff and council social events;
- Devotional and sharing times at meetings;
- Support from local church congregation.

Wellbeing

Wellbeing impacts on every member of the school community and is an essential component of the Pastoral Care framework. At St John's, we aim to develop the whole child to be the best that they can be: spiritually, emotionally, socially, academically and physically. It is widely understood that when wellbeing of each student is prioritised, learning outcomes can be improved.

Wellbeing within the school setting can be implemented proactively and also reactively. To proactively engage with students to support and upskill them, the Wellbeing teacher may teach specific social skills to classes as a timetabled weekly lesson. It is the expectation that class teachers intentionally use the 'Play is the Way' program to teach students to self-manage and self-calm to develop social skills required to be active participants within both the classroom and playground environments.

In the secondary school, support for students and upskilling them to cope with various social situations and pressures may be addressed in both Health lessons and Form, and some topics may be covered in Senior Devotion times.

The Wellbeing team may reactively provide follow up support within the Restorative Practices framework as issues arise that students are unable to deal with themselves. Staff may facilitate conversations between parties to restore relationships, so students can engage with the learning process.

Staff may revisit strategies with students to enhance individual wellbeing if needed. Consultation with parents or making referrals to outside agencies may also occur if required.

Congregational Links

A valued link exists between our school and St John's congregation. The interaction of pastoral care between the two institutions may be fostered by:

- Shared worship experiences;
- Provision of weekly newsletters and bulletins;
- Educational interaction sessions.

Review

As needs and situations are always changing our school is committed to evaluation and review of this Pastoral Care policy in accordance with our five yearly strategic planning or Quality Schools Survey Results.

Key Personnel

Each member of our school community has a responsibility for pastoral care. However, key personnel involved in managing and delivering pastoral care at our school will include:

- School Wellbeing Officer;
- Parish Pastor;
- Assistant to Principal, Relationship Management.

Financial Commitment

The implementation of pastoral care is also backed up by a commitment to make finances available for:

- Part-time employment of staff to manage/implement the school's pastoral care policy;
- Training of staff in legal requirements affecting the school's operation;
- Professional development of staff to meet the needs of the pastoral care program;
- Provision of buildings/rooms to conduct pastoral care program;
- Provision of resources for use in pastoral care program.